



“Eucalyptus”



*Illustrations and plan drawings represent depictions by artists and may not accurately portray finished product. See an Oasis Community manager for actual dimensioned construction documents.

6-Bedrooms* **2-1/2-Baths** **3-Car garage** **3,042 s.f.**
(*Incl. Converted Bonus)

A covered entry and broad foyer offers spaciousness reserved for more expensive homes. Yet this gregarious, fun-loving home imbues convenience, smart space utilization and affordability. The home office becomes a guest suite when adding a shower to the powder. The 2-chef kitchen and Oasis peninsula/bar offer interaction with company in the expansive nook. Upstairs you've a delightful Owners Suite with corner soaking tub, step-in shower, private commode room and a pretty special walk-in. All in all, it pretty much has it all.

What you'll like about Oasis:

- Wide open entry
- The Oasis Peninsula
- Gathering place nook
- Deep Walk-in pantry
- Formal dining-or-not
- More space for kids
- Guest suite, main floor
- Spa-like owners suite
- 3-Car garage standard

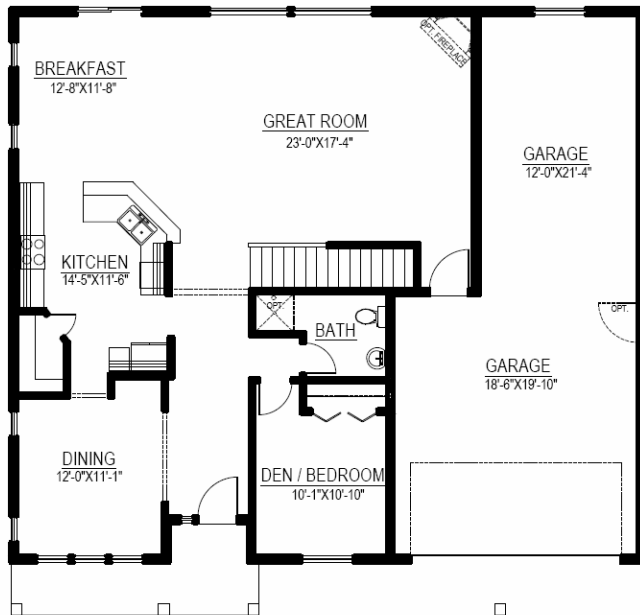
“Eucalyptus”

Standard Total s.f.: 3,042

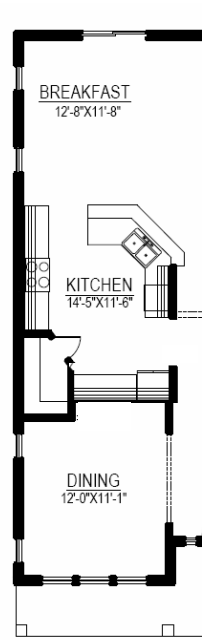


Main Floor

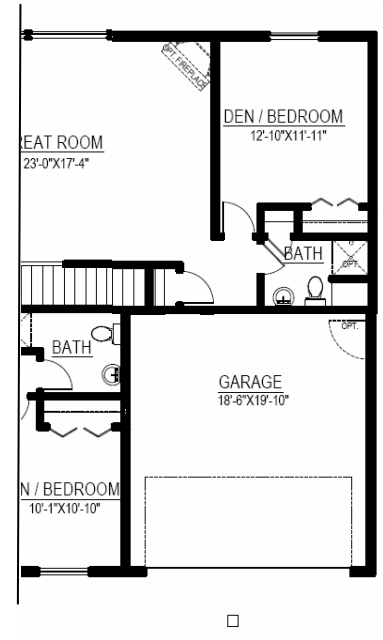
Main Floor Standard: 1,341 sf.



Main Floor
Option #1:
* No Charge.
1,341 sf.



Main Floor
Option #2:
* Ask for pricing.
1,593 sf.



Second Floor

Second Floor Standard: 1,701 sf.



Second Floor
Option #1:
* No Charge.
1,701 sf.

*Ask about our option to convert the bonus room into a 6th bedroom!

*All illustrations and plan drawings represent depictions by artists and may not accurately portray finished product. See an Oasis Community manager for actual dimensioned construction documents.

Oasis Custom Homes is a Brand Name of Varsity Development, LLC
VARSIDL958BE an equal opportunity builder. (Rev: 03/11/2011)

