

Oasis Custom Homes
has plans for you
to reach across
generations.



“Extended Family” home Plans



The essence of the "Extended Family" home plans:

privacy, security and a sense of belonging that only living next door can provide.

* Spacious extended family suite

* Walk-in closet

* Expanded 5' tiled shower

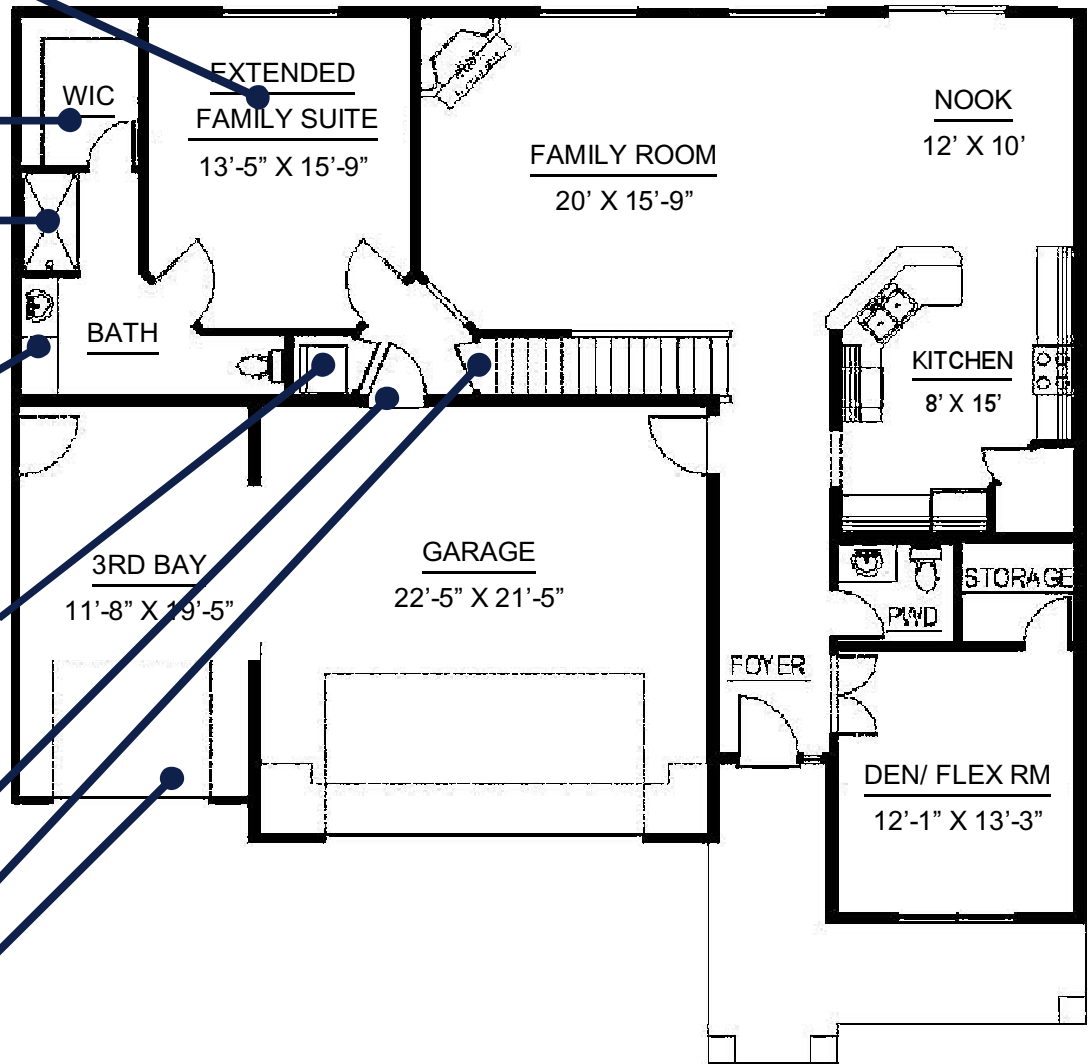
* Double lav, or single + make-up

* Space for a stack washer & dryer.

* Private entry from garage

* Coat closet

* Separate garage bay



Extended Family Plan addition to Callas or Dahlia:

4 th car garage	\$ 7,910
Extend garage to back of home	\$ 5,300
Separated HVAC system (Mini-split), remote thermostat	\$ 5,800
Conversion to finished space (not plumbed)	\$ 3,900
Bathroom fixtures, materials, per specs	\$ 9,400
Space, hook-ups for stack washer/dryer (no appliances)	\$ 300
Space, hooks, shelving for closet	\$ 440
Total for the Inclusive Addition:	\$ 33,050

Picture this—
a cost efficient way for you
to add an entirely new living
environment to your home
for only \$29,000!

Package price for the above **\$29,000**

In an Oasis Neighborhood we call house plans that welcome more family members a place at the table “Extended Family” plans. Each of the three available plans, at different size ranges and different prices, offers a separate living area for additional adults living under the same roof and an adjacent garage bay for their ease of coming and going. Separate climate controls makes heating and cooling of the Extended Family area a breeze-and avoids conflicting “ideal comfort” levels enjoyed by other family members. “In 31 years of building homes in Eastern Washington we have found a growing trend towards this style of living,” explains Oasis Custom Homes builder Leslie Savitch. “We offer ‘easy living’ homes that have no steps and are built as ramblers for mature family members seeking a place of their own. We pioneered a series of 1200-1900 s.f. homes in the Horn Rapids area that was highly successful during the 2008-2010 period and we’ve now incorporated those homes into almost all our Oasis Neighborhoods. In addition we now have Extended Family plans for households where they’d rather stay connected.” He points out that when Barak Obama’s mother-in-law moved into the White House, it began a national resurgence of inviting parents and extended family members to share life together under the same roof.

Extended Family plans available in the following areas:

- **W. Pasco** at Oasis at the Park (Casa Del Sol)
- **S. Richland** at Badger Park Estates
- **W. Richland** at Collins Ridge, Phase II
- **Richland** at Reata Ridge
- **Kennewick** at Creekstone
- **Connell** at Oasis Village
- **Moses Lake** at Stratford Road Estates

What you'll like about Oasis Custom Homes:



Wide open entry

You’ve only one chance to make a first impression. And nothing compares to throwing open your front door as people enter your home. A gracious, open hallway is welcoming and indicative of a richer home.

The Oasis Peninsula

Designed by a famed architect to specifically respond to the need for a quick and easy serving bar – and an entertainment bar– the Oasis Peninsula also hides dinner dishes from company.



Gathering place nook

Think about where you spend your time – where you balance your checkbook– where you solve family disputes– where visitors sit and share their stories. It’s the nook area. And no builder gives you the space that Oasis does.

Deep Walk-in pantry

When you take advantage of those bulk buys at Costco and Wal-Mart, you need a place to store them.



Formal dining-or-not

Every Oasis comes with a formal dining room. Some use it as a music room or library, others say, “just drop the dining room and give me more kitchen and nook space.” The builder will do either for you at no charge.



More space for kids

The builder likes to tell his story about daughters who require as much closet space as his wife (particularly Catherine). He designed your next house accordingly.



Guest suite, main floor

Every Oasis comes with a den that can be converted, with the addition of a shower or tub, into a guest suite. Sweet for overnight guests. They (and you) maintain privacy.

Spa-like owners suite

A restful escape where you can immerse yourself in the lovely corner soaking tub and read your novel or enjoy music sort of rounds-out your reasons for selecting an owners bath that makes you feel like you’re in an...Oasis.



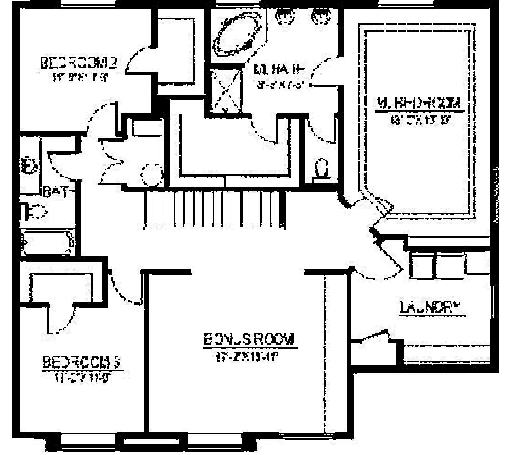
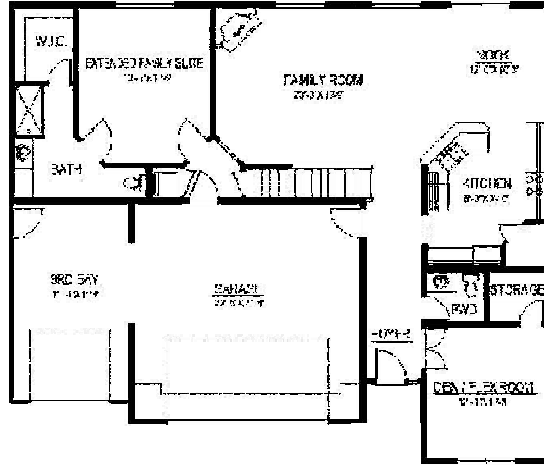
3-Car garage standard

Every 2-story Oasis home comes with a third car bay for a car, boat, storage, or work space. Oasis plans can also be ordered with a fourth and fifth car garage, depending on lot size. Ask.

Callas

Base Price: \$227,900*
 Extended Family \$29,000
\$256,900

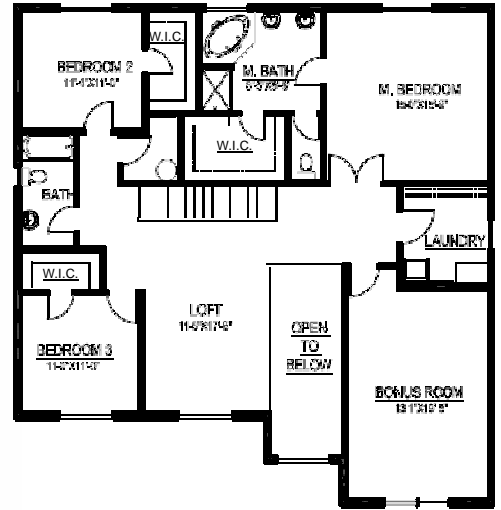
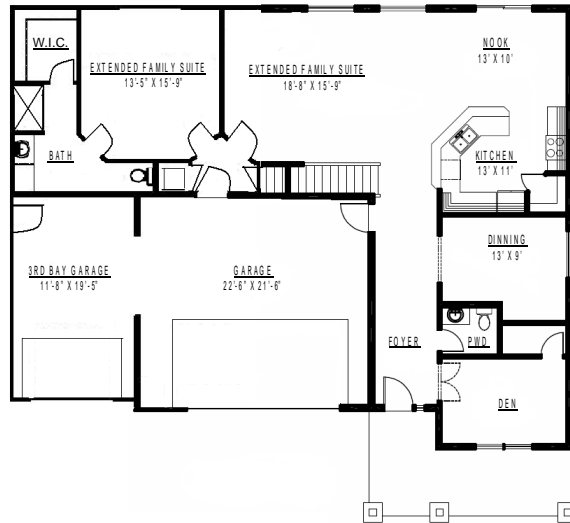
Base sf.: 2,564
 Extended Family sf: 446
Total sf.: 3,010



Dahlia

Base Price: \$237,900*
 Extended Family \$29,000
\$266,900

Base sf.: 2,834
 Extended Family sf: 446
Total sf.: 3,280



*Base prices shown here as an example are from Oasis at the Park in Pasco. See the community manager where you'd like to live for base prices in your neighborhood.

