

\*Illustrations and plan drawings represent depictions by artists and may not accurately portray finished product.  
See an Oasis Community manager for actual dimensioned construction documents.

# When you pick an “Iris” you’ve made your first good choice.

**3-Bedrooms**

**2-Baths**

**2-Car garage**

**1,911 s.f.**

Lovely craftsman-inspired architecture with broad, white trim is enhanced with a variety of front door accent colors. An expansive formal dining room may be “dressed up” with wainscoting, or ceiling treatments. A convenient nook in the dining offers either a place for a hutch or for an optional built-in wet bar. The study/computer nook situated off the great room and near the kitchen provides a great room has double doors for closing your work space. The Oasis kitchen with plenty of elbow room at the breakfast bar a territorial view of nook, great room, and window wall to the back yard. Great plan for informal living and entertaining.

**Builder of Choice.**



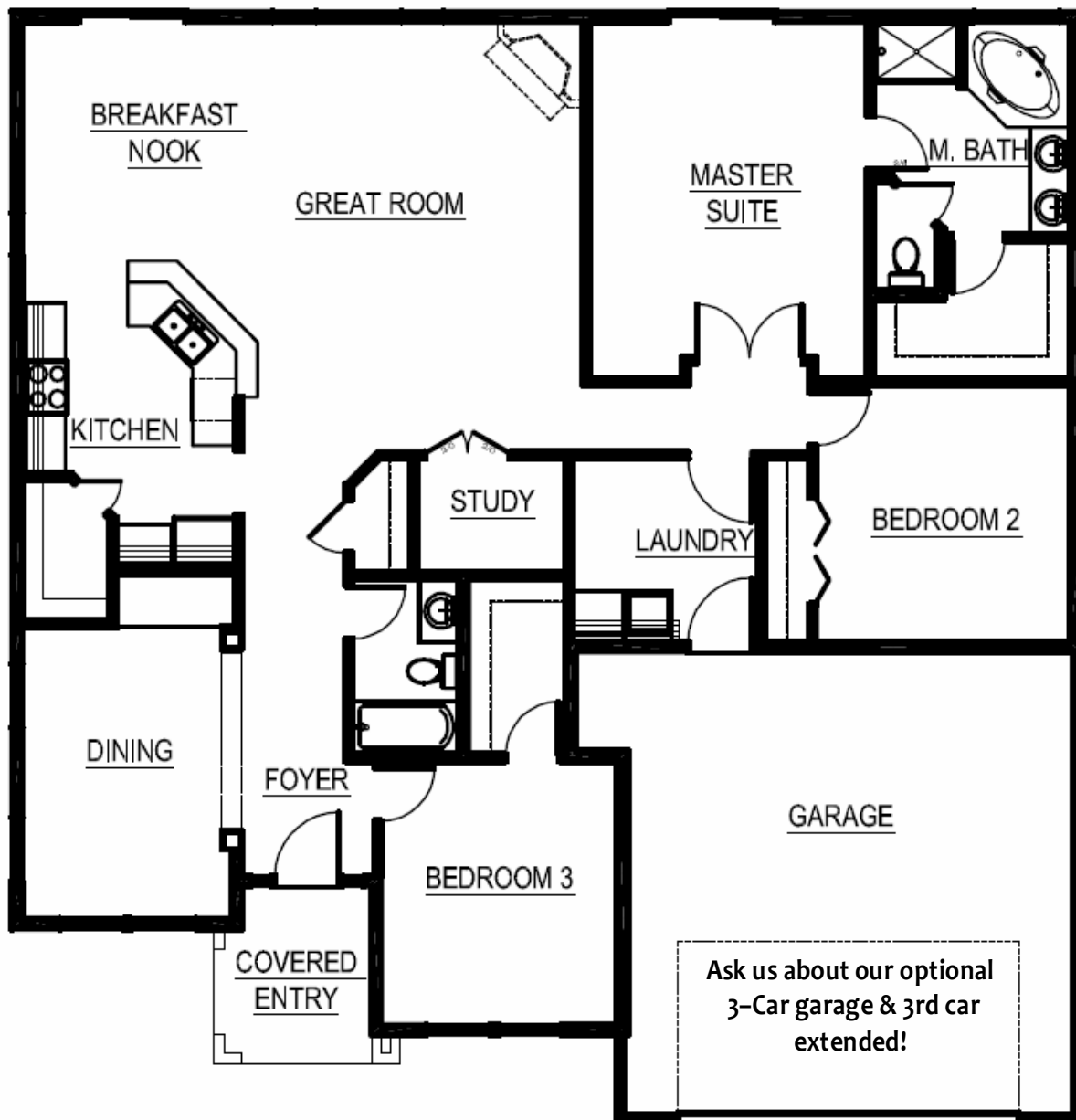
#### **What you’ll like about Oasis:**

- ◆ Dramatic, craftsman-style architecture
- ◆ Architect-selected exterior home colors
- ◆ 1 and 2-story plans with master up & down
- ◆ Hundreds of pre-priced options to help customize your home
- ◆ Meet with our interiors experts to select exciting flooring & counter tops
- ◆ Make plan changes, right up ‘til the pre-construction meeting
- ◆ Meet the Builder prior to construction
- ◆ See for yourself what the real estate community knows: Oasis is the... “Builder of Choice”

# “Iris”

1,911 s.f.

## Main Floor:



\*Illustrations and plan drawings represent depictions by artists and may not accurately portray finished product. See an Oasis Community manager for actual dimensioned construction documents.

