

*Illustrations and plan drawings represent depictions by artists and may not accurately portray finished product.
See an Oasis Community manager for actual dimensioned construction documents.

When you pick a “Trillium” you’ve made your first good choice.

3-Bedrooms Den 3-Baths 2-Car garage 2,029 s.f.

People rave about the idea of three bedrooms, each with its own bathroom! Upon entering, the home opens up before you until you reach the great room where you take in a lovely vista of both thoughtfully-designed kitchen, informal carpeted living area and year-round covered patio for entertaining. On the serving side of the gracious Oasis peninsula with serving bar, you view all the inside and outside happenings. The Owners Suite opens to the covered deck and offers a luxurious look and feel. Many rooms have multi-use applications so your home can change as your household needs change. Visit one of our model homes and talk with our Community Manager for ideas.

Builder of Choice.



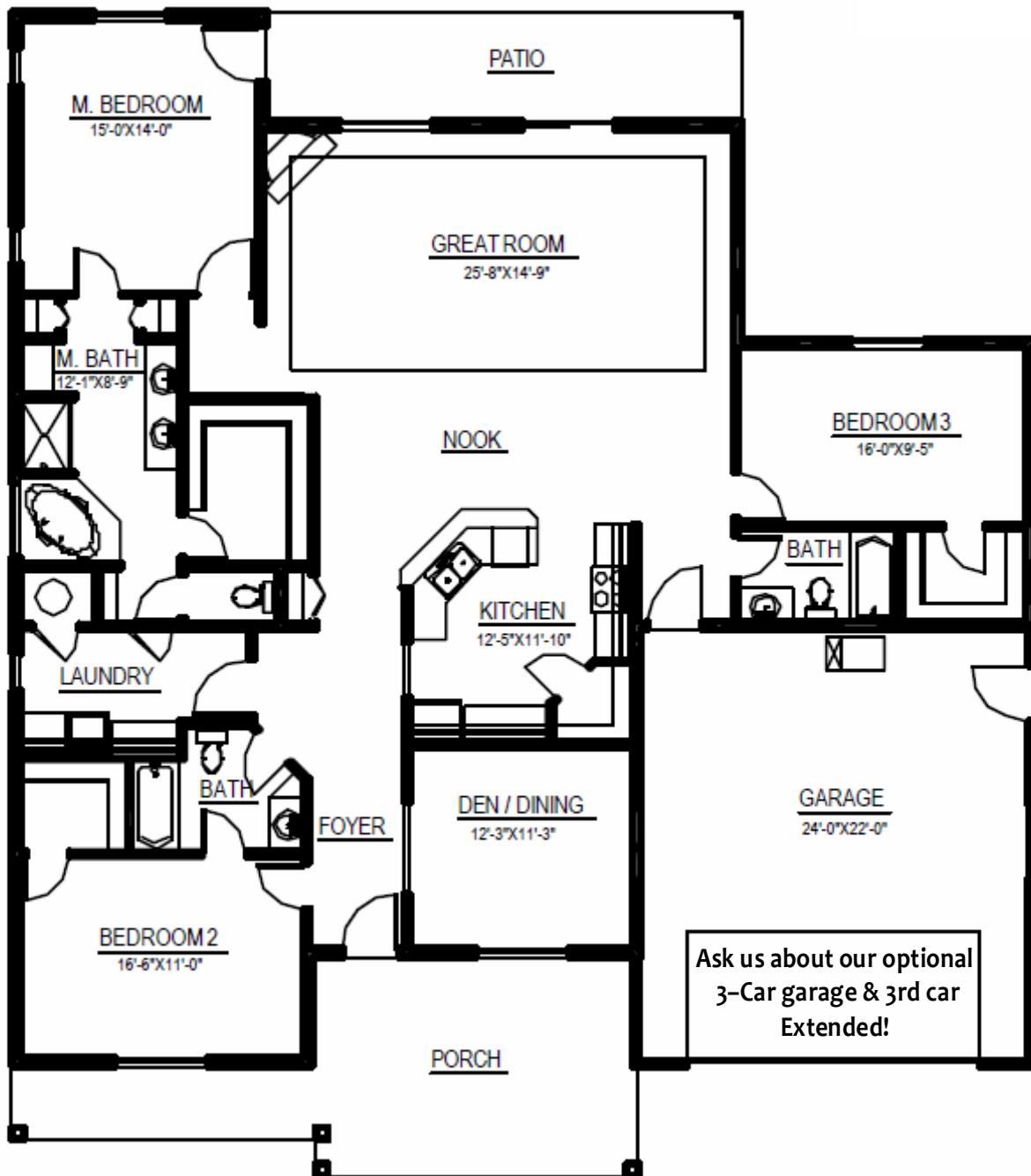
What you’ll like about Oasis:

- ◆ Dramatic, craftsman-style architecture
- ◆ Architect-selected exterior home colors
- ◆ 1 and 2-story plans with master up & down
- ◆ Hundreds of pre-priced options to help customize your home
- ◆ Meet with our interiors experts to select exciting flooring & counter tops
- ◆ Make plan changes, right up ‘til the pre-construction meeting
- ◆ Meet the Builder prior to construction
- ◆ See for yourself what the real estate community knows: Oasis is the...
“Builder of Choice”

“Trillium”

2,029 s.f.

Main Floor:



*Fireplace and man door are options.

*Illustrations and plan drawings represent depictions by artists and may not accurately portray finished product. See an Oasis Community manager for actual dimensioned construction documents.

